



XPERT®

Winchester® Xpert® Bolt-Action Rifle Owner's Manual

Important instructions for the

Winchester® Xpert® Bolt-Action Rifle

Winchester Repeating Arms
Customer Service Department (United States)
275 Winchester Avenue
Morgan, UT 84050-9333
Phone: (800) 945-5237
Email: customersupport@winchesterguns.com

If you have any questions or comments regarding
your new firearm, please feel free to write or call us.
Use the space below to record information about your
new firearm.

Model _____

Serial Number _____

Purchased From _____

Date of Purchase _____

Winchester is a registered trademark of Olin Corporation.

Specifications within this owner's manual are correct at the time of printing and
subject to change without notice.

Contents	Page
WARNING: You Are Responsible For Firearms Safety . . .	1
General Description and Operation	6
Nomenclature	6
Serial Number	7
Initial Cleaning and Oiling	7
Operation of the "Safety"	8
Installing and Removing the Bolt	9
Ammunition	12
Magazine	13
Loading	13
Firing	16
Unloading	17
Sight Adjustment	18
Mounting a Scope	18
Trigger Adjustment	20
Dry Firing	21
Installing Accessories on the Fore-end	21
Muzzle Brakes and Suppressors	22
Cleaning and Maintenance Suggestions	23
Parts, Service, Repair and Questions	25
Website Information	26
State-By-State Warnings	27

WARNING: YOU ARE RESPONSIBLE FOR FIREARMS SAFETY

▲WARNING

FAILURE TO FOLLOW ANY OF THE FOLLOWING WARNINGS COULD RESULT IN SERIOUS INJURY OR DEATH.

As a firearm owner, you accept a set of demanding responsibilities. How seriously you take these responsibilities can be the difference between life and death.

There is no excuse for careless or abusive handling of any firearm. At all times handle this firearm and all other firearms with intense respect for their power and potential danger.

Please read and understand all of the cautions, warnings, notices, proper handling procedures and instructions outlined in this owner's manual before using your new firearm.

1 ALWAYS KEEP THE MUZZLE OF YOUR FIREARM POINTED IN A SAFE DIRECTION EVEN THOUGH YOU ARE CERTAIN IT IS UNLOADED.

Never point any firearm at anything you do not intend to shoot. Be extremely alert and aware of all persons and property within the range of your ammunition.

2 NEVER RELY TOTALLY ON YOUR FIREARM'S MECHANICAL "SAFETY" DEVICE. LIKE ANY

MECHANICAL DEVICE, A "SAFETY" CAN SOMETIMES FAIL; IT CAN BE JARRED OR INADVERTENTLY MANIPULATED INTO AN UNSAFE CONDITION.

The word "safety" describes a firearm's trigger block mechanism, sear block mechanism, hammer block mechanism or firing pin block mechanism.

Mechanical "safeties" are designed to place your firearm in a safer status, and no guarantee can be made that the firearm will not fire even if the "safety" is in the on safe position. Mechanical "safeties" merely aid safe gun handling and are no excuse for pointing your firearm's muzzle in an unsafe direction. See "Operation of the 'Safety'" on pages 8-9 for instructions on the operation of this firearm's "safety."

Remember, safe gun handling does not stop with your firearm's mechanical "safety" devices, it starts there. Always treat this firearm with the respect due a loaded, ready-to-fire firearm.

Some firearms do not have a mechanical "safety." Many target firearms, lever-action firearms and pistols do not have manual "safety" mechanisms. Therefore it is critical to read and understand the owner's manual for every firearm which explains the safe operation of the firearm.

While it is a good idea to "test" your firearm's mechanical "safety" periodically for proper function, never test the "safety" while your firearm is loaded or pointed in an unsafe direction.

3 WHENEVER YOU HANDLE ANY FIREARM, OR HAND IT TO SOMEONE, ALWAYS OPEN THE ACTION IMMEDIATELY AND VISUALLY CHECK THE FIREARM'S CHAMBER TO MAKE CERTAIN THAT THE FIREARM IS COMPLETELY UNLOADED.

Make certain the firearm does not inadvertently contain any ammunition. Remember, merely removing the magazine does not mean the chamber is unloaded. Always keep the chamber empty and the "safety" in the on safe position unless shooting is imminent.

4 ALWAYS WEAR EAR AND EYE PROTECTION WHEN SHOOTING.

Unprotected, repeated exposure to gunfire can cause hearing damage. Wear hearing protection (shooting earplugs or muffs) to guard against such damage.

Wear shooting glasses to protect your eyes from flying particles. Allow proper distance (eye relief) between a scope and your eye when firing a scoped pistol, rifle or shotgun. Do not use unorthodox shooting methods that could cause the rearward travel of the slide or bolt of a firearm to contact your eyes, face or hands. Always keep a safe distance between the muzzle of your firearm and any persons nearby, as muzzle blast, debris and ejecting cartridges could inflict serious injury.

Always wear eye protection when disassembling and cleaning any firearm to prevent the possibility of springs, spring-tensioned parts, solvents or other agents from contacting your eyes.

5 KEEP ALL FIREARMS UNLOADED DURING TRANSPORT, EVEN WHEN STORED IN A HOLSTER, GUN CASE, SCABBARD OR OTHER CONTAINER.

6 DROPPING OR JARRING A LOADED FIREARM CAN CAUSE ACCIDENTAL DISCHARGE.

This can occur even with the "safety" in the on safe position. Be extremely careful while hunting or during any shooting activity to avoid dropping any firearm.

7 HUNTING FROM ELEVATED SURFACES SUCH AS TREESTANDS IS DANGEROUS.

Doing so may increase the risk of mishandling a firearm. The following rules should always be observed by you and those you hunt with. Always make certain that the stand being used is safe and stable. Always make certain that your firearm is unloaded when it is being taken up and down from the stand. Always make certain that your firearm is not dropped from the stand, or dropped while it is being taken up or down from the stand. Remember, a loaded firearm may discharge when dropped, even with the "safety" in the on safe position.

8 STORE YOUR FIREARM AND AMMUNITION SEPARATELY, WELL BEYOND THE REACH OF CHILDREN.

Take prudent safeguards to ensure your firearm does not become available to untrained, inexperienced or unwelcome hands. Store all firearms in secure, locked cases or a gun safe. Keep your firearm unloaded when not in use.

9 BEWARE OF BARREL OBSTRUCTIONS.

Mud, snow and an infinite variety of other objects may inadvertently lodge in a barrel bore. It only takes a small obstruction to cause dangerously increased pressures that can damage your firearm and cause serious injury to yourself and others.

BEFORE CHECKING FOR A BARREL OBSTRUCTION, BE CERTAIN YOUR FIREARM IS COMPLETELY UNLOADED, THERE IS NOT A LIVE CARTRIDGE IN THE CHAMBER AND THE "SAFETY" IS IN THE ON SAFE POSITION.

After ensuring that the firearm is completely unloaded, open the breech or action and look through the barrel to be sure it is clear of obstructions. If an obstruction is seen, no matter how small it may be, clean the bore with a cleaning rod and patch as described on pages 23-25 of this owner's manual.

10 BE ALERT TO THE SIGNS OF AMMUNITION MALFUNCTION. IF YOU DETECT AN OFF SOUND OR LIGHT RECOIL WHEN A CARTRIDGE IS FIRED, DO NOT LOAD ANOTHER CARTRIDGE INTO THE CHAMBER.

If your firearm fails to fire, keep the muzzle pointed in a safe direction for a minimum of 30 seconds. Rotate the ejection area of the firearm away from you, carefully open the action and remove the cartridge from the chamber. If the cartridge rim (primer) is indented, the defective cartridge should be disposed

of in a way that cannot cause harm. If the cartridge rim (primer) is not indented, your firearm should be examined by a qualified gunsmith and the cause of the malfunction corrected before further use. Glance down the barrel to make sure that no obstructions remain in the barrel. Completely clear the barrel before loading and firing again. Failure to follow these instructions can cause extensive damage to your firearm and possible serious injury to yourself and others.

11 NEVER INSERT A CARTRIDGE OF THE INCORRECT CALIBER INTO ANY FIREARM.

The caliber of your firearm is marked on the barrel. Store all cartridges of different calibers in completely separate and well-marked containers. Never store cartridges of mixed calibers in a common container or in your pockets. See pages 12-13 for more information on the correct ammunition for your firearm.

12 EXAMINE EVERY CARTRIDGE YOU PUT IN YOUR FIREARM.

We assume no responsibility for the use of unsafe or improper firearm and ammunition combinations or damage or injury caused by damaged ammunition. It is your responsibility to read and heed all warnings in this owner's manual and on ammunition boxes. See pages 12-13 for more information on the correct ammunition for your firearm.

13 USE ONLY SAAMI APPROVED AMMUNITION.

The barrel and action of this firearm have been made with safety margins over the pressures established by the Sporting Arms and Ammunition Manufacturers' Institute (SAAMI) for Service Cartridges. However, we assume no responsibility for incidents which occur through the use of cartridges of nonstandard dimension or those developing pressures in excess of SAAMI established standards.

14 DISCHARGING FIREARMS IN POORLY VENTILATED AREAS, CLEANING FIREARMS OR HANDLING AMMUNITION MAY RESULT IN EXPOSURE TO LEAD AND OTHER SUBSTANCES KNOWN TO CAUSE BIRTH DEFECTS, REPRODUCTIVE HARM AND OTHER SERIOUS PHYSICAL INJURY. HAVE ADEQUATE VENTILATION AT ALL TIMES. WASH HANDS THOROUGHLY AFTER EXPOSURE.

15 DO NOT SNAP THE FIRING PIN ON AN EMPTY CHAMBER; THE CHAMBER MAY NOT BE EMPTY!

Treat every firearm with the respect due a loaded firearm, even though you are certain the firearm is unloaded.

16 KEEP YOUR FINGERS AWAY FROM THE TRIGGER WHILE LOADING AND UNLOADING UNTIL SHOOTING IS IMMINENT.

17 BE SURE OF YOUR TARGET AND BACKSTOP, PARTICULARLY DURING LOW LIGHT PERIODS.

Know the range of your ammunition. Never shoot at water or hard objects.

18 ALWAYS UNLOAD YOUR FIREARM'S CHAMBER BEFORE CROSSING A FENCE, CLIMBING A TREE, JUMPING A DITCH OR NEGOTIATING OTHER OBSTACLES.

Never place your firearm on or against a fence, tree, car or other similar object.

19 BE DEFENSIVE AND ON GUARD AGAINST UNSAFE GUN HANDLING AROUND YOU AND OTHERS.

Don't be timid when it comes to firearm safety. If you observe other shooters violating any of these safety precautions, politely suggest safer handling practices.

20 BE CERTAIN YOUR FIREARM IS UNLOADED BEFORE CLEANING.

Special and extreme care should be taken to be sure your firearm is unloaded before disassembly, cleaning and reassembly.

Keep ammunition away from the cleaning location. Never test the mechanical function of any firearm with live ammunition.

21 TEACH AND SUPERVISE FIREARMS SAFETY TO ALL MEMBERS OF YOUR FAMILY, ESPECIALLY TO CHILDREN AND NON-SHOOTERS.

Closely supervise newcomers to the shooting sports. Encourage enrollment in hunting and shooting safety courses.

22 NEVER DRINK ALCOHOLIC BEVERAGES OR TAKE ANY TYPE OF DRUGS BEFORE OR DURING SHOOTING.

Your vision, motor skills and judgment could be dangerously impaired, making your gun handling unsafe to you and to others.

23 READ AND HEED ALL WARNINGS IN THIS OWNER'S MANUAL, ON AMMUNITION BOXES AND WITH ALL ACCESSORIES THAT YOU INSTALL ON YOUR FIREARM.

It is your responsibility to secure the most up-to-date information on the safe handling procedures of your Winchester firearm. We assume no liability for incidents which occur when unsafe or improper firearm accessories or ammunition combinations are used.

24 PRACTICE PERIODIC MAINTENANCE, AVOID UNAUTHORIZED SERVICING.

Your firearm is a mechanical device which will not last forever, and as such, is subject to wear and requires periodic inspection, adjustment and service.

Winchester firearms should be serviced by a Winchester Repeating Arms Authorized Repair Center or by our Service Facility in Arnold, Missouri. We assume no responsibility for injuries suffered or caused by unauthorized servicing, alterations or modifications of Winchester firearms.

25 DO NOT, UNDER ANY CIRCUMSTANCES, ALTER THE TRIGGER, "SAFETY" OR OTHER PARTS OF THE FIRING MECHANISM OF THIS OR ANY OTHER FIREARM EXCEPT AS OTHERWISE DESCRIBED IN THIS MANUAL.

We reserve the right to refuse service on firearms that have been altered, added to or substantially changed. Removal of metal from the barrel, or modifications of the firing mechanism and/or operating parts may lead to a refusal of service on such firearms. You will be charged for parts and labor to return the firearm to original specifications prior to servicing your firearm.

With respect to **AFTERMARKET PARTS OR COMPONENTS** (including, for example, aftermarket trigger systems, barrels, muzzle brakes, suppressors, magazines, etc.), **USE AT YOUR OWN RISK**. Winchester firearms are designed and engineered to meet stringent safety standards. Winchester Repeating Arms is not responsible for personal injuries or property damage caused by alterations to a firearm. This includes the incorporation of aftermarket parts or components that

may or may not satisfy Sporting Arms and Ammunition Manufacturers' Institute (SAAMI) standards (for example, an aftermarket trigger system may not satisfy SAAMI minimum trigger pull standards, etc.) or may create other dangerous conditions. These conditions may or may not be apparent to the user (for example, installing an aftermarket barrel may have the effect of altering critical firearm dimensions, including headspace, and may create an unsafe firing condition, etc.). Aftermarket parts or components that do not satisfy SAAMI standards, or that could create other dangerous conditions, should not be used.

FAILURE TO FOLLOW THIS WARNING COULD RESULT IN SERIOUS INJURY OR DEATH, AS WELL AS CAUSE DAMAGE TO YOUR FIREARM.

BE CAREFUL!

GENERAL DESCRIPTION AND OPERATION

GENERAL DESCRIPTION

The Winchester® Xpert® is made from lightweight, tough composites and rugged steel using the most modern manufacturing methods. The Xpert is sure to meet your shooting expectations.

GENERAL OPERATION

The Winchester Xpert is a bolt-action rifle that operates by lifting the bolt handle, drawing the bolt rearward and then sliding the bolt forward and rotating the bolt handle downward until it stops. This process takes a cartridge from the magazine and loads it into the chamber for firing.

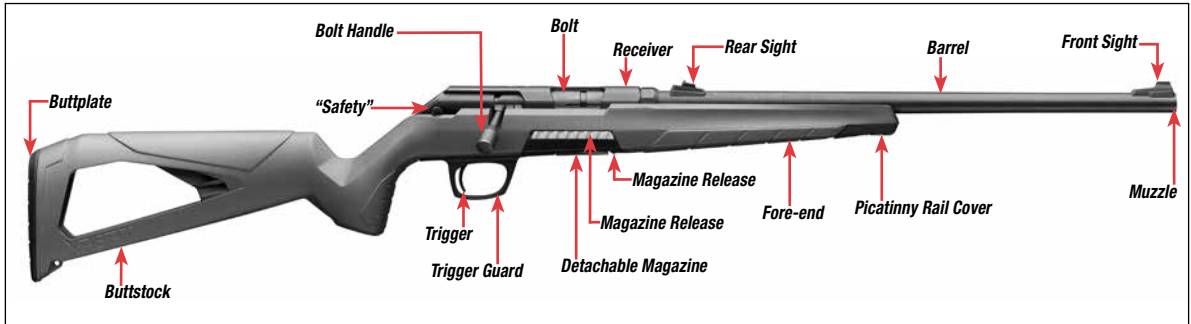
Prior to using live ammunition, familiarize yourself thoroughly with the operating instructions in this owner's manual. Get accustomed to the feel of your new firearm and know the forces required to operate the action. Learn how to pull the trigger and, above all, know the location and operation of the "safety." Procedures for disassembly and operation of various components are outlined later in this owner's manual. Please read and study them thoroughly.

NOMENCLATURE

In conventional firearm terminology the position and movement of firearm parts are described as they occur with the firearm horizontal and in the normal firing position: i.e., the muzzle is forward or in front; the buttstock is rearward or to the rear; the trigger is downward or underneath; the sight is upward or on top. For general parts nomenclature, refer to Figure 1 on page 7. Figure 5 on pages 10 and 11 covers the general features and benefits of the Xpert design.

Throughout this owner's manual the "action" refers to the mechanism of this rifle which loads and secures the cartridges in the chamber.

FIGURE 1



SERIAL NUMBER

The serial number is located at the rear of the receiver on the left side. Record the serial number at the front of this owner's manual for future reference.

INITIAL CLEANING AND OILING

⚠WARNING

WEAR EYE PROTECTION WHEN ASSEMBLING AND DISASSEMBLING YOUR RIFLE TO PREVENT SPRINGS, SPRING-LOADED PARTS, SOLVENTS OR OTHER AGENTS FROM CONTACTING YOUR EYES, RESULTING IN INJURY.

Some metal parts of your new firearm have been coated at the factory with a rust preventative compound. Before

using your firearm, clean the anti-rust compound from the inside of the barrel, receiver, bolt mechanism and the action/chamber areas. A high quality, lightweight gun oil should be used to remove this compound and to give your new firearm its first lubrication. Clean the barrel using a cleaning rod and patch as explained under "Cleaning and Maintenance Suggestions" on pages 23-25 in this owner's manual.

Lightly lubricate the bolt lug, bolt and moving parts with a high-quality, lightweight gun oil. Use oil sparingly, a very light film is sufficient. Excessive oil should be wiped off, especially in cold weather.

OPERATION OF THE “SAFETY”

▲WARNING

ALWAYS KEEP THE “SAFETY” IN THE ON SAFE POSITION UNLESS SHOOTING IS IMMINENT. ALWAYS KEEP THE MUZZLE POINTED IN A SAFE DIRECTION. FAILURE TO FOLLOW THESE WARNINGS COULD RESULT IN SERIOUS INJURY OR DEATH.

The “safety” lever is located on the right side of the receiver to the rear of the bolt handle (when in the locked position).

When the “safety” lever is moved to the rear, the “safety” is in the on safe position (Figure 2, page 8). This indirectly blocks the trigger and locks the bolt in the closed position. The letter “S” is exposed to indicate the status of the rifle.

When the “safety” is pushed forward, a red dot is exposed, indicating that the “safety” is in the off safe position and the rifle is ready to fire (Figure 3, page 8).

▲WARNING

DO NOT DEPEND ON THE RED COLOR ALONE TO INDICATE YOUR FIREARM’S SAFETY STATUS. TIME, EXPOSURE TO THE ELEMENTS, AND THE ABRASIVE ACTION OF CLEANING AGENTS CAN ERASE IT. FAILURE TO FOLLOW THIS WARNING COULD RESULT IN SERIOUS INJURY OR DEATH.

FIGURE 2

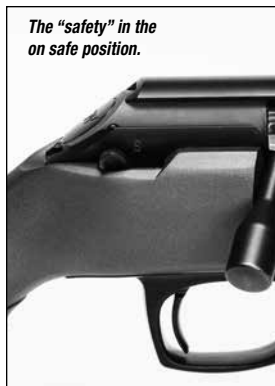


FIGURE 3



The “safety” mechanism, when engaged, is designed to prevent firing. However, this mechanism will not necessarily prevent the accidental discharge of this firearm as a result of jarring or abuse such as occurs when a firearm is dropped.

Never rely totally on your firearm’s “safety.” It is merely an aid to safe gun handling. Like any mechanical device the “safety” can possibly fail; it can be bumped off or inadvertently manipulated into an unsafe condition. Always keep your rifle pointed in a safe direction.

At all times, keep the “safety” in the on safe position and the barrel pointed in a safe direction. It is advisable to never load your rifle until you are in the field, at the

location you intend to begin hunting or you are at your bench on a range and it is clear to shoot. For extra safety on a range, and as a courtesy to others, fully unload the rifle and keep the action in the open position at all times other than when it is clear to shoot.

It is essential that you become very familiar with the feel, look and operation of the “safety” on this rifle before attempting to load and shoot it.

INSTALLING AND REMOVING THE BOLT

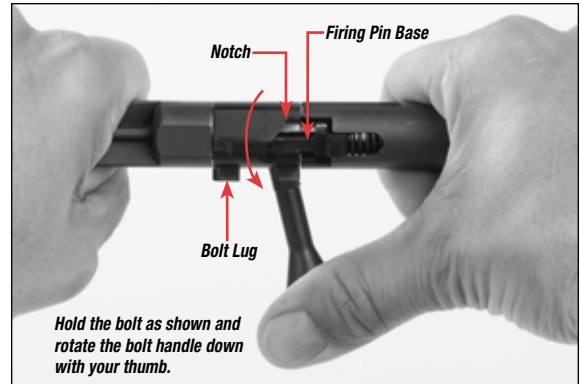
▲WARNING

ALWAYS KEEP THE MUZZLE POINTED IN A SAFE DIRECTION. BEFORE INSERTING OR REMOVING THE BOLT, VISUALLY INSPECT THE CHAMBER TO BE ABSOLUTELY CERTAIN THE FIREARM IS COMPLETELY UNLOADED. PLACE THE “SAFETY” IN THE ON SAFE POSITION. FAILURE TO FOLLOW THIS WARNING COULD RESULT IN SERIOUS INJURY OR DEATH.

The bolt of your rifle may have been packed separately in the carton in which your rifle is shipped. You will need to insert the bolt into the action. In addition, it is always advisable to remove the bolt before cleaning.

Before inserting the bolt into your rifle, make sure the firing pin is cocked. To cock the firing pin, grasp both ends of the bolt and rotate the bolt handle with your thumb until the firing pin base engages the notch in the bolt handle (Figure 4, page 9).

FIGURE 4



BOLT INSTALLATION

1. Remove the magazine from the rifle.
2. Verify that the chamber is unloaded.
3. Align the bolt in the rear opening of the receiver.
4. Push the bolt completely forward and rotate the handle down to lock it (Figure 6, page 12).
5. Immediately place the “safety” in the on safe position. The rifle is now completely assembled and may be operated normally.

BOLT REMOVAL

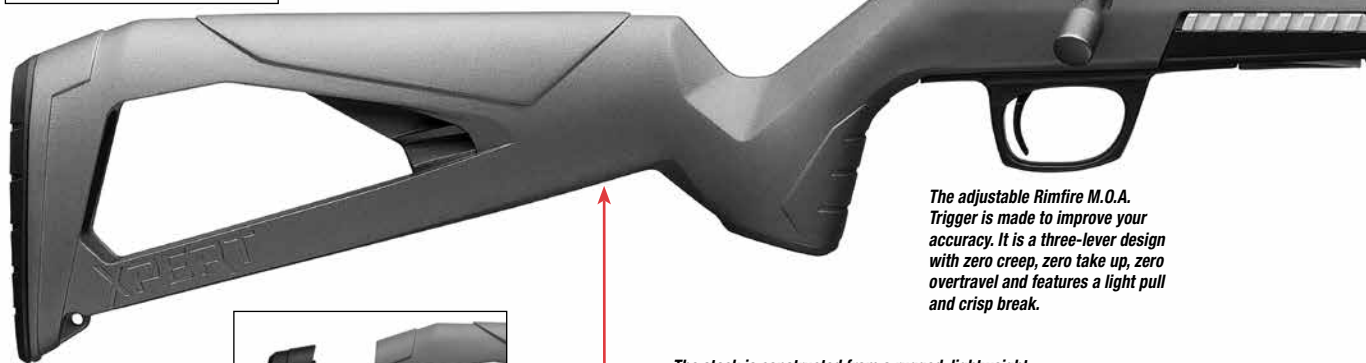
1. Remove the magazine from the rifle.

(Continued on page 12.)

FIGURE 5



An accessory clip-on cheek riser raises your comb height 1/2" to better align your eye with a scope or optics .



The steel receiver is drilled and tapped to accept scope mounts.

The adjustable Rimfire M.O.A. Trigger is made to improve your accuracy. It is a three-lever design with zero creep, zero take up, zero overtravel and features a light pull and crisp break.

The stock is constructed from a rugged, lightweight polymer. The design eliminates excess weight and features a trim pistol grip that is ideal for hands of all sizes. In-molded sling swivel studs are also featured.



The accessory length of pull spacer adds 3/4" to the stock .

XPERT[®]

RIFLE FEATURES

The rear sight is adjustable for windage and elevation.



A Picatinny rail and integrated sling swivel stud are located under the removable fore-end cap.

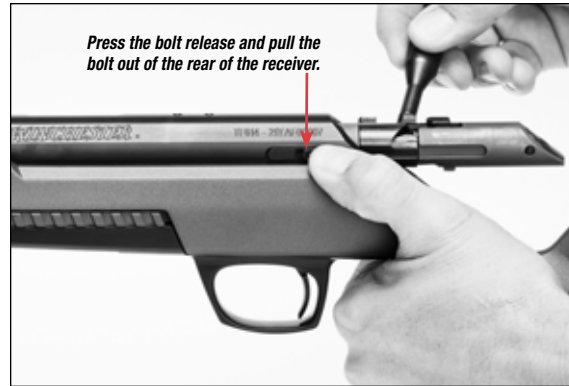
The detachable rotary magazine uses a torsion spring and follower design that is easy to load and enhances reliability. The Xpert will also accept magazines compatible with the Ruger[®] 10/22.



FIGURE 6



FIGURE 7



2. Open the bolt and verify that the chamber is unloaded.
3. The bolt release is the horizontal bar on the left side of the receiver. Press the rear of the bolt release and carefully draw the bolt to the rear and out of the receiver (Figure 7, page 12).

NOTICE

WHEN REMOVING THE BOLT FROM THE RECEIVER, TAKE CARE TO PREVENT THE BOLT FROM STRIKING AND DAMAGING THE COMB OF THE STOCK.

Never interchange bolts with another rifle. If the bolt included with your rifle is lost or damaged, return your rifle to the factory for a replacement bolt.

AMMUNITION

⚠WARNING

DISCHARGING FIREARMS IN POORLY VENTILATED AREAS, CLEANING FIREARMS OR HANDLING AMMUNITION MAY RESULT IN EXPOSURE TO LEAD AND OTHER SUBSTANCES KNOWN TO CAUSE BIRTH DEFECTS, REPRODUCTIVE HARM AND OTHER SERIOUS PHYSICAL INJURY. HAVE ADEQUATE VENTILATION AT ALL TIMES. WASH HANDS THOROUGHLY AFTER EXPOSURE.

DO NOT USE AMMUNITION OTHER THAN WHAT IS INSCRIBED ON THE LEFT SIDE OF THE BARREL.

EXAMINE EVERY CARTRIDGE YOU PUT IN YOUR FIREARM.

The barrel and action of this firearm have been made with safety margins over the pressures established by the Sporting Arms and Ammunition Manufacturers' Institute (SAAMI) for Service Cartridges. However, we assume no responsibility for incidents which occur through the use of cartridges of nonstandard dimension or those developing pressures in excess of SAAMI established standards.

MAGAZINE

The Xpert utilizes a detachable rotary magazine that uses a torsion drive spring and follower design for smooth, reliable feeding. The factory magazine capacity for the Xpert is 10 cartridges.

In addition to the factory magazines, the Xpert will also accept magazines compatible with the Ruger® 10/22.

⚠️WARNING

AFTER THE LAST CARTRIDGE HAS BEEN FIRED, OR WHEN SHOOTING IS NO LONGER IMMINENT, IMMEDIATELY PLACE THE "SAFETY" IN THE ON SAFE POSITION. FAILURE TO FOLLOW THESE WARNINGS COULD RESULT IN SERIOUS INJURY OR DEATH.

EVEN WITH THE BOLT OPEN AFTER SHOOTING, DO NOT ASSUME THE RIFLE IS UNLOADED. ALWAYS INSPECT THE CHAMBER, BARREL AND MAGAZINE TO BE CERTAIN THE RIFLE IS COMPLETELY UNLOADED. FAILURE TO

FOLLOW THESE WARNINGS COULD RESULT IN SERIOUS INJURY OR DEATH.

REMOVING THE MAGAZINE FROM THE RIFLE DOES NOT PREVENT THE RIFLE FROM BEING FIRED. IF A CARTRIDGE IS IN THE CHAMBER, THE "SAFETY" IS IN THE OFF SAFE POSITION, AND THE TRIGGER IS PULLED, THE RIFLE WILL FIRE EVEN IF NO MAGAZINE IS PRESENT IN THE RIFLE.

LOADING

⚠️WARNING

WHEN LOADING YOUR RIFLE ALWAYS KEEP THE MUZZLE POINTED IN A SAFE DIRECTION, ALWAYS PLACE THE "SAFETY" IN THE ON SAFE POSITION AND KEEP YOUR FINGERS AWAY FROM THE TRIGGER. FAILURE TO FOLLOW THESE WARNINGS COULD RESULT IN SERIOUS INJURY OR DEATH.

TO AVOID ACCIDENTAL DISCHARGE, DO NOT CARRY YOUR RIFLE WITH A CARTRIDGE IN THE CHAMBER. WHEN FIRING IS NO LONGER IMMINENT, PLACE THE "SAFETY" IN THE ON SAFE POSITION AND UNLOAD THE CHAMBER. FAILURE TO FOLLOW THESE WARNINGS COULD RESULT IN SERIOUS INJURY OR DEATH.

There are two methods used to load a cartridge into the chamber of the rifle: 1) Loading from the magazine 2) Loading through the ejection port.

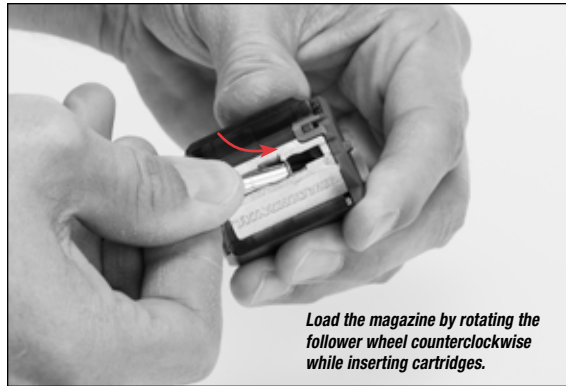
FIGURE 8



FIGURE 9



FIGURE 10



REMOVING AND LOADING THE MAGAZINE

1. Open the bolt and verify that the chamber is unloaded.
2. Close the bolt.
3. Place the “safety” in the on safe position.
4. Eject the magazine from the rifle using one of the two magazine release methods to activate the magazine catch. The magazine will drop into your hand using either method.

The first method to operate the magazine catch is by sliding both side releases, located on the sides of the rifle above the magazine, rearward (Figure 8, page 14).

5. Use your thumb to rotate the follower wheel located on the right rear side of the magazine counterclockwise and insert the cartridge, base first, into the magazine (Figure 10, page 14). Rotate the follower wheel to the next position and load another cartridge. Continue to load the magazine in this manner. Care should be exercised when positioning each cartridge so that its base is flush with the rear of the magazine.

NOTICE

IF THE NOSE OF A CARTRIDGE PROTRUDES BEYOND THE FRONT OF THE MAGAZINE, IT COULD CAUSE FEEDING PROBLEMS OR INTERFERE WHEN INSERTING THE MAGAZINE INTO THE RIFLE.

LOADING THE CHAMBER FROM THE MAGAZINE

1. Open the bolt and verify that the chamber is unloaded.
2. Close the bolt.
3. Place the “safety” in the on safe position.
4. Remove and load the magazine as explained previously.
5. Insert the loaded magazine into the rifle by inserting it into the magazine well until it is retained in place by the magazine catch.
6. Load the chamber by lifting the bolt handle completely up. Draw the bolt completely rearward, then push the bolt forward and rotate the bolt handle down.
7. Immediately verify that the “safety” is in the on safe position.

▲WARNING

THE RIFLE IS NOW READY TO FIRE BY SIMPLY MOVING THE “SAFETY” TO THE OFF SAFE POSITION AND PULLING THE TRIGGER.

SINGLE-SHOT LOADING FROM THE MAGAZINE

If you wish to fire a single-shot from your rifle, it is recommended that you use the following loading procedure.

1. Open the bolt and verify that the chamber is unloaded.
2. Close the bolt.
3. Place the “safety” in the on safe position.
4. Remove the magazine and load a single cartridge into the magazine.
5. Insert the magazine into the rifle.
6. When ready to shoot, cycle the bolt fully to load the single cartridge from the magazine into the chamber.
7. Immediately verify that the “safety” is in the on safe position.

▲WARNING

THE RIFLE IS NOW READY TO FIRE BY SIMPLY MOVING THE “SAFETY” TO THE OFF SAFE POSITION AND PULLING THE TRIGGER.

SINGLE-SHOT LOADING DIRECTLY TO THE CHAMBER

You may also load your rifle by placing a cartridge directly into the chamber. To load the rifle in this manner, use the following loading procedure.

1. Open the bolt and verify that the chamber is unloaded.
2. Insert an unloaded magazine into the rifle.

3. Insert a single cartridge into the chamber.
4. When ready to shoot, push the bolt completely forward and rotate the bolt handle down.
5. Immediately place the “safety” in the on safe position.

⚠WARNING

THE RIFLE IS NOW READY TO FIRE BY SIMPLY MOVING THE “SAFETY” TO THE OFF SAFE POSITION AND PULLING THE TRIGGER.

FIRING

⚠WARNING

NEVER CHAMBER A CARTRIDGE OR MOVE THE “SAFETY” FROM THE ON SAFE POSITION UNLESS SHOOTING IS IMMINENT. ALWAYS KEEP THE MUZZLE POINTED IN A SAFE DIRECTION. FAILURE TO FOLLOW THESE WARNINGS COULD RESULT IN SERIOUS INJURY OR DEATH.

1. Load a cartridge into the chamber (as explained previously) from the magazine or directly to the chamber.
2. With a cartridge in the chamber, you need only move the “safety” to the off safe position to make the rifle ready for firing.

3. When ready to fire, move the “safety” to the off safe position, take aim and squeeze the trigger.
4. After a cartridge is fired, cycle the bolt rearward to eject the empty case. If you wish to continue shooting, and the magazine contains ammunition, push the bolt fully forward. This picks up a loaded cartridge from the magazine and chambers it. You may continue to fire the rifle in this manner until the magazine is empty by pulling the trigger to fire each cartridge.
5. If you are done shooting, leave the bolt to the rear, with the breech in the open position so that you may visually inspect the chamber, barrel and magazine to be sure they contain no cartridges.

⚠WARNING

AFTER FIRING, OR WHEN SHOOTING IS NO LONGER IMMINENT, IMMEDIATELY PLACE THE “SAFETY” IN THE ON SAFE POSITION. FAILURE TO FOLLOW THESE WARNINGS COULD RESULT IN SERIOUS INJURY OR DEATH.

EVEN WITH THE BOLT OPEN AFTER SHOOTING, DO NOT ASSUME THE RIFLE IS UNLOADED. ALWAYS INSPECT THE CHAMBER, BARREL, FEED MECHANISM AND MAGAZINE TO BE CERTAIN THE RIFLE IS COMPLETELY UNLOADED. FAILURE TO FOLLOW THESE WARNINGS COULD RESULT IN SERIOUS INJURY OR DEATH.

UNLOADING

⚠WARNING

WHEN UNLOADING YOUR RIFLE ALWAYS PLACE THE “SAFETY” IN THE ON SAFE POSITION. KEEP THE MUZZLE POINTED IN A SAFE DIRECTION AND YOUR FINGERS AWAY FROM THE TRIGGER. FAILURE TO FOLLOW THESE WARNINGS COULD RESULT IN SERIOUS INJURY OR DEATH.

ALWAYS INSPECT THE CHAMBER, BARREL AND MAGAZINE CAREFULLY AFTER UNLOADING TO BE SURE ALL LIVE CARTRIDGES ARE CLEARED FROM THE FIREARM.

REMOVING THE MAGAZINE FROM THE RIFLE DOES NOT PREVENT THE RIFLE FROM BEING FIRED. IF A CARTRIDGE IS IN THE CHAMBER, THE “SAFETY” IS IN THE OFF SAFE POSITION, AND THE TRIGGER IS PULLED, THE RIFLE WILL FIRE EVEN IF NO MAGAZINE IS PRESENT IN THE RIFLE.

UNLOADING THE RIFLE

1. Open the bolt and eject any cartridge or cartridge case in the chamber. Leave the bolt in the rearward position with the action open.
2. Place the “safety” in the on safe position.
3. Look into the chamber to verify that it is unloaded.
4. Push the magazine release button rearward and remove the magazine.
5. With the chamber empty and the magazine removed, close the bolt and ensure the “safety” is in the on safe position.
6. Strip all the cartridges from the magazine as explained in “Unloading the Magazine.”
7. Insert the empty magazine into the rifle until it is retained by the magazine catch.

UNLOADING THE MAGAZINE

1. Press the magazine release and remove the magazine. Remember, merely removing the magazine does not mean the chamber is unloaded.
2. Unload the rifle as explained previously, making sure the chamber is completely unloaded.
3. Rotate the follower wheel counterclockwise slightly to relieve the pressure on the cartridge and allow it to fall out of the magazine. Perform this operation until all ammunition is removed from the magazine.
4. Unload any extra magazines in this manner.

SIGHT ADJUSTMENT

⚠WARNING

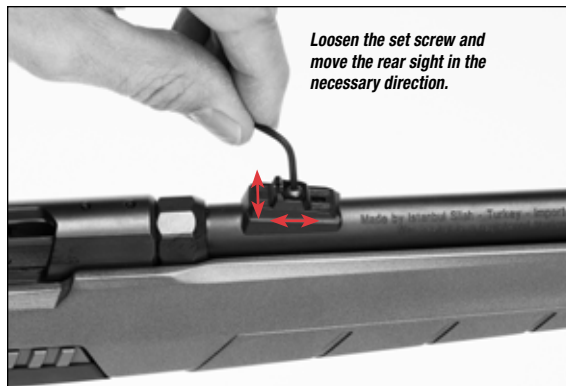
BEFORE PERFORMING SIGHT ADJUSTMENT PROCEDURES, PLACE THE “SAFETY” IN THE ON SAFE POSITION AND MAKE SURE YOUR RIFLE IS COMPLETELY UNLOADED. REMOVE THE MAGAZINE, CHECK THE ACTION AND CHAMBER FOR CARTRIDGES. KEEP THE MUZZLE POINTED IN A SAFE DIRECTION. FAILURE TO FOLLOW THESE WARNINGS COULD RESULT IN SERIOUS INJURY OR DEATH.

The Xpert features a fixed, blade-type front sight and a rear sight that is adjustable for windage and elevation. A 2mm hex wrench is necessary to adjust the rear sight. Adjust the rear sight as follows:

Windage: Adjustments are made by loosening the screw on the top of the rear sight (Figure 11, page 18) and sliding the sight to the left or right. Move the sight in the direction you would like the point of impact to move. Carefully tighten the screw after adjusting.

Elevation: Adjustments are made by loosening the screw on the top of the rear sight. To raise the point of impact, slide the sight rearward. To lower the point of impact, slide the sight forward.

FIGURE 11



NOTICE

WHEN ADJUSTING THE SIGHT, TAKE CARE NOT TO OVERTIGHTEN THE REAR SIGHT SCREW, DAMAGE CAN OCCUR TO THE REAR SIGHT.

MOUNTING A SCOPE

⚠WARNING

BEFORE MOUNTING A SCOPE, SIGHT OR OTHER ACCESSORIES TO YOUR RIFLE, PLACE THE “SAFETY” IN

THE ON SAFE POSITION. OPEN THE ACTION AND MAKE CERTAIN YOUR RIFLE IS COMPLETELY UNLOADED. KEEP THE MUZZLE POINTED IN A SAFE DIRECTION. FAILURE TO FOLLOW THESE WARNINGS COULD RESULT IN SERIOUS INJURY OR DEATH.

The receiver is drilled and tapped for scope bases. Each scope base is mounted using two 6-48 screws.

NOTICE

ALWAYS USE THE CORRECT BASES FOR THIS RIFLE AND THE APPROPRIATE LENGTH SCREWS.

1. Open the bolt and verify that the chamber is unloaded.
2. Remove the bolt as explained on pages 9 and 12.
3. Place your rifle in a gun vise or on a table or other safe/secure location. Protect the finish with rags or other padding.
4. You should have compatible bases and four screws of the correct length.
5. Clean all oil, grease or dirt from the receiver top and from the scope base parts.
6. Position your rifle with the top of the receiver upward.
7. Pre-position the bases on the receiver top to determine the best orientation of the bases.
8. Insert the screws through the bases and screw them into the receiver top using the correct tool.

You must use 6-48 screws of the appropriate length to ensure proper thread engagement. Once the bases are installed, check inside the receiver to verify that the base mounting screws are not too long and will not interfere with the operation of the bolt.

Many gunsmiths find it helpful to use a drop of serviceable thread locking compound to assure the screws stay tight. Make sure the thread locking compound does not get into the action or trigger.

Be careful to assure that the threads of each screw engage properly in the threads in the receiver to prevent stripping the threads in the receiver.
9. Tighten the screws snugly, then torque to 20 in. lb.
10. Mount your scope rings and scope as outlined in the instructions supplied with your scope rings and/or scope. Always make sure you have the proper eye relief. Always make sure that the saddle crossbolts and cap bolts are fully tightened before using your firearm.

FIGURE 12



FIGURE 13



TRIGGER ADJUSTMENT

⚠WARNING

BEFORE ADJUSTING THE TRIGGER, ALWAYS PLACE THE “SAFETY” IN THE ON SAFE POSITION. KEEP THE MUZZLE POINTED IN A SAFE DIRECTION AND YOUR FINGERS AWAY FROM THE TRIGGER. ALWAYS INSPECT THE CHAMBER, BARREL AND MAGAZINE CAREFULLY TO BE SURE ALL LIVE CARTRIDGES ARE CLEARED FROM THE FIREARM. FAILURE TO FOLLOW THESE WARNINGS COULD RESULT IN SERIOUS INJURY OR DEATH.

The Xpert Rimfire M.O.A Trigger is pre-set at the factory at approximately 4 pounds and can be adjusted within a

range of approximately 3½ to 6 pounds. The trigger pull weight can be tuned to your specifications by performing the following procedures:

1. Remove the magazine from the rifle by pressing the magazine release button.
2. Open the bolt and verify the rifle is unloaded.
3. Place your rifle in a gun vise or on a table or other safe/secure location with the bottom facing up. Protect the finish with rags or other padding.
4. Use a 3mm hex wrench to remove the two screws that secure the trigger guard (Figure 12 page 20).

5. Lift the trigger guard from the rifle (Figure 13, page 20).
6. The location of the trigger adjustment screw is shown in Figure 14 on page 21. Use a 1.5mm hex wrench to adjust the trigger pull weight.
 - To increase the weight of the trigger pull, turn the adjustment screw in a clockwise direction.
 - To decrease the weight of the trigger pull, turn the adjustment screw in a counterclockwise direction.

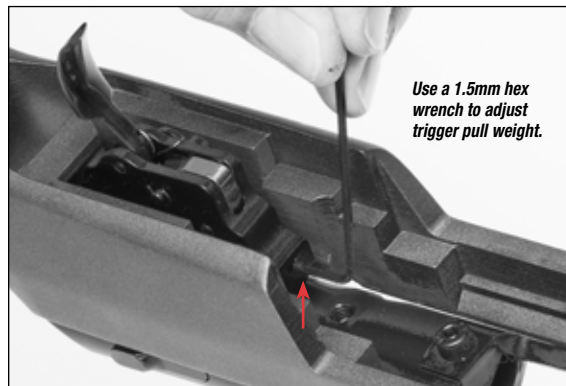
IMPORTANT: If trigger pull is increased too much, the trigger cannot be pulled. Turn the screw counterclockwise until the trigger can be pulled.
7. Trigger pull can be measured, with the rifle unloaded and the bolt closed, using a very accurate spring scale or a commercially available set of trigger pull measuring weights. Most gunsmiths can also measure trigger pull for you.
8. When adjustments are completed, return the trigger guard to the rifle and torque the screws to 20 in. lb.

DRY FIRING

NOTICE

DO NOT DRY FIRE THE XPERT RIFLE. DRY FIRING MAY DAMAGE THE FIREARM COMPONENTS, POSSIBLY RENDERING THE FIREARM INOPERABLE.

FIGURE 14



INSTALLING ACCESSORIES ON THE FORE-END

⚠WARNING

BEFORE INSTALLING A SLING OR ACCESSORY TO YOUR RIFLE, PLACE THE "SAFETY" IN THE ON SAFE POSITION AND MAKE SURE YOUR RIFLE IS COMPLETELY UNLOADED. REMOVE THE MAGAZINE, CHECK THE ACTION AND CHAMBER FOR CARTRIDGES. KEEP THE MUZZLE POINTED IN A SAFE DIRECTION. FAILURE TO FOLLOW THESE WARNINGS COULD RESULT IN SERIOUS INJURY OR DEATH.

If you wish to install an accessory such as a bipod, flashlight or sling on your Xpert rifle, a small Picatinny-

FIGURE 15



style rail is integrated on the front of the stock fore-end and protected with a cover. The cover is easily removed by inserting a fingernail under a forward corner of the cover and lifting it from the rifle (Figure 15, page 22).

MUZZLE BRAKES AND SUPPRESSORS

⚠️WARNING

THE ADDITION OF A RECOIL REDUCING MUZZLE BRAKE SIGNIFICANTLY INCREASES NOISE AND MUZZLE BLAST. YOU, AND EVERYONE IN CLOSE PROXIMITY TO THE FIREARM, SHOULD ALWAYS WEAR HEARING

PROTECTION TO HELP PREVENT HEARING LOSS OR DAMAGE AND SAFETY GLASSES TO HELP PREVENT DEBRIS FROM INJURING THE EYES.

WHEN USING A SUPPRESSOR, ALWAYS WEAR HEARING AND EYE PROTECTION. EVEN THOUGH SOUND IS REDUCED WHEN USING A SUPPRESSOR, THE NOISE LEVELS ARE STILL SIGNIFICANT ENOUGH TO CAUSE PERMANENT HEARING LOSS. BE AWARE THAT USING A SUPPRESSOR INCREASES THE BACK PRESSURE IN THE BARREL WHEN A CARTRIDGE IS FIRED. THE INCREASE IN BACK PRESSURE MAY CAUSE DEBRIS FROM THE CARTRIDGE TO EXIT THE EJECTION PORT OF THE FIREARM AND CONTACT YOUR EYES, EARS AND FACE, OR THOSE OF ANYONE IN CLOSE PROXIMITY TO THE FIREARM. THE INCREASE IN BACK PRESSURE MAY ALSO RESULT IN THE DEPOSIT OF ADDITIONAL DEBRIS IN YOUR FIREARM; ACCORDINGLY, AN ACCELERATED CLEANING SCHEDULE FOR YOUR FIREARM MAY BE NECESSARY.

ENSURE THAT ANY MUZZLE BRAKE OR SUPPRESSOR THAT YOU INTEND TO USE ON YOUR FIREARM IS DESIGNED FOR USE WITH YOUR FIREARM'S CALIBER. NEVER USE A MUZZLE BRAKE OR SUPPRESSOR THAT IS DESIGNED FOR RIMFIRE USE ONLY ON A CENTERFIRE FIREARM. BEFORE INSTALLING OR

REMOVING A MUZZLE BRAKE OR SUPPRESSOR TO/ FROM YOUR FIREARM, READ THIS OWNER'S MANUAL AND ANY OWNER'S MANUAL INCLUDED WITH THE DEVICE, AND PRECISELY FOLLOW ALL INSTALLATION AND MAINTENANCE INSTRUCTIONS PROVIDED BY THE SUPPRESSOR OR MUZZLE BRAKE MANUFACTURER. DURING INSTALLATION OR REMOVAL, ALWAYS KEEP THE MUZZLE POINTED IN A SAFE DIRECTION AND MAKE CERTAIN THAT THE FIREARM IS COMPLETELY UNLOADED, WITH THE MAGAZINE REMOVED AND THE ACTION IN THE OPEN POSITION.

PERIODICALLY CHECK THE MUZZLE BRAKE OR SUPPRESSOR TO ASSURE THAT IT IS TIGHT AND FIRMLY SEATED. BEFORE CHECKING, FOLLOW ALL SAFETY GUIDELINES PREVIOUSLY OUTLINED. ENSURE THE MUZZLE BRAKE OR SUPPRESSOR IS COOL BEFORE TOUCHING IT.

FAILURE TO FOLLOW THESE WARNINGS MAY RESULT IN INJURY OR DEATH TO YOU OR THOSE AROUND YOU!

Most Winchester rifles equipped with a muzzle brake also include a thread protector that can be installed in place of the muzzle brake. Whether using the thread protector, muzzle brake or suppressor, be aware that your firearm's point of impact may change as the harmonics of the barrel are affected when changing the weight at the end of the barrel.

CLEANING AND MAINTENANCE SUGGESTIONS

▲WARNING

BEFORE PERFORMING CLEANING PROCEDURES, PLACE THE "SAFETY" IN THE ON SAFE POSITION. OPEN THE ACTION AND MAKE CERTAIN YOUR RIFLE IS COMPLETELY UNLOADED. KEEP THE MUZZLE POINTED IN A SAFE DIRECTION. FAILURE TO FOLLOW THESE WARNINGS COULD RESULT IN SERIOUS INJURY OR DEATH.

▲WARNING

WEAR EYE PROTECTION WHEN DISASSEMBLING AND CLEANING YOUR RIFLE TO PREVENT SPRINGS, SPRING-LOADED PARTS, SOLVENTS OR OTHER AGENTS FROM CONTACTING YOUR EYES, RESULTING IN INJURY.

▲WARNING

KEEP ALL AMMUNITION AWAY FROM THE CLEANING AREA. NEVER TEST THE MECHANICAL FUNCTION OF YOUR RIFLE WITH LIVE AMMUNITION. FAILURE TO FOLLOW THESE WARNINGS COULD RESULT IN SERIOUS INJURY OR DEATH.

NOTICE

SOME CLEANING SOLVENTS, LUBRICANTS AND OTHER STRONG CHEMICALS SUCH AS THOSE FOUND IN DEET-CONTAINING INSECT REPELLENTS, SUNSCREENS, ETC. MAY DAMAGE THE FINISHES OF YOUR FIREARM. USE CARE TO PREVENT CHEMICALS FROM MAKING CONTACT WITH FINISHES WHEN CLEANING THE BORE AND ACTION OF YOUR FIREARM.

CLEANING PROCEDURES

Your Xpert will function better and more reliably over a longer period of time if it is properly maintained and kept clean. Clean your firearm after every day of shooting, and more often if it becomes excessively dirty. A minimum cleaning includes wiping down the firearm and oiling key parts. Regular maintenance also includes cleaning the barrel.

If you encounter a function problem be sure to give your firearm a thorough cleaning to see if it solves the problem before seeking the services of a Winchester Authorized Repair Center or our Service Facility in Arnold, Missouri or a qualified gunsmith.

1. Remove the magazine and bolt as explained previously.
2. Use a cleaning rod with a slotted tip or a cleaning jag and a patch large enough for a snug fit in the bore. Insert the rod and patch into the barrel at the breech

end and run it back and forth several times. Care should be exercised to ensure that the cleaning rod does not strike the crown of the muzzle, as damage to this area can affect the accuracy of your rifle.

3. Inspect the chamber and bore for powder fouling. A normal amount of powder residue can be expected and is not serious. It can usually be removed with a patch saturated with nitro solvent. If, or when, fouling should become heavy, it can be removed with a brass bore brush. Dip or spray the brush with nitro solvent and scrub the chamber and bore until the fouling is removed. To prevent brass bristles from breaking off, the brush should be pushed completely through the barrel before being withdrawn.
4. After all fouling has been removed, the chamber and bore should be wiped dry. When the bore is dry, pass a slightly oiled patch through it for preservation. A fine, light gun oil is recommended.
5. Inspect the barrel and chamber to be certain no patches have inadvertently been left in them. Remove any that remain.
6. Use a small brush or rag to remove dirt or other foreign matter from inside the receiver and other parts of the action.
7. Lightly lubricate the bolt lug, bolt and all moving parts with a high-quality, light gun oil. Use oil sparingly, a very light film is sufficient.

NOTICE

DO NOT POUR LARGE QUANTITIES OF OIL INTO THE RECEIVER OR OTHER PARTS.

8. Wipe all exposed metal surfaces with a lightly oiled cloth making certain that all finger marks are removed. Finger marks provide a place where moisture can accumulate. The metal of the gun should receive a light film of oil any time the rifle has been exposed to weather or handling.

CLEANING THE MAGAZINE

Frequently inspect magazines to determine the need for cleaning as lubricant and dirt will gradually collect in the mechanism. Normally, the magazine should be cleaned after firing 500 to 1,000 cartridges.

NOTICE

DO NOT DISASSEMBLE THE MAGAZINE.

1. Clean the magazine by spraying it with a metal and polymer-safe gun cleaning solvent. Spray the magazine with this solvent, both inside and out, to loosen debris.
2. Place your finger over the loading port and shake it vigorously (with the loading port away from you) to remove solvent and residue from the magazine.
3. Use compressed air to dry the magazine or allow it to air dry.

NOTICE

NEVER ATTEMPT TO TAKE YOUR FIREARM APART FURTHER THAN EXPLAINED IN THIS OWNER'S MANUAL. YOUR FIREARM IS A SPECIALIZED, FINELY FITTED MECHANISM. YOU MAY PERMANENTLY DAMAGE IT BY ATTEMPTING TO DISASSEMBLE THE INNER MECHANISM. IF FURTHER DISASSEMBLY FOR SERVICE OR CLEANING IS REQUIRED, TAKE YOUR FIREARM TO A QUALIFIED GUNSMITH, OR CONTACT OUR ARNOLD, MISSOURI SERVICE FACILITY AS EXPLAINED UNDER "PARTS, SERVICE, REPAIR AND QUESTIONS" ON PAGES 25-26.

PARTS, SERVICE, REPAIR AND QUESTIONS

If your Winchester firearm should require service or repair, we suggest first contacting a Winchester Repeating Arms Authorized Repair Center. To locate an Authorized Repair Center visit winchesterguns.com, contact our customer service department or ask your local Winchester Repeating Arms dealer. You may also send your firearm to the Winchester Repeating Arms Service Facility in Arnold, Missouri. In order to avoid service delays, do not send your firearm directly to our service facility without authorization from one of our service specialists.

Parts listings, a list of Authorized Repair Centers, service procedures, service/repair form and general product information are on the web at winchesterguns.com.

When returning your firearm for servicing, you must do the following:

1. Be sure it is completely unloaded.
2. Remove any optics, optic mounts or other accessories.
3. Package it securely in a cardboard container.
4. Enclose the service/repair form available at winchesterguns.com or a letter that clearly describes the trouble experienced, the ammunition used and the repairs desired. Also include your name, email address (if possible) and a daytime phone number where you can be reached.
5. Never return ammunition with your firearm. It is against postal and most commerce regulations.

PARTS, SERVICE, REPAIR STATUS AND TECHNICAL QUESTIONS

**Winchester Repeating Arms
Parts and Service**
3005 Arnold Tenbrook Road
Arnold, MO 63010-9406
(800) 322-4626

GENERAL PRODUCT AND HISTORICAL QUESTIONS

Winchester Repeating Arms

Customer Service

275 Winchester Avenue
Morgan, UT 84050-9333
(800) 945-5237
customersupport@winchesterguns.com

⚠WARNING

**PARTS ARE MADE FOR WINCHESTER BRAND FIREARMS
MANUFACTURED BY OR FOR WINCHESTER REPEATING
ARMS, AND SHOULD NOT BE USED IN OTHER FIREARMS,
EVEN THOUGH MODELS MAY BE SIMILAR. IMPROPERLY
FITTED PARTS MAY BE DANGEROUS. FAILURE TO
FOLLOW THIS WARNING MAY CAUSE INJURY OR DEATH
AND CAUSE DAMAGE TO YOUR FIREARM.**

WEBSITE INFORMATION

An information resource for Winchester Repeating Arms can be found online.

- List of Authorized Repair Centers.
- Customer Service information.
- Firearm Service/Repair Form.
- Answers to many technical and historical questions.
- Links to helpful sites.

Go to winchesterguns.com

STATE-BY-STATE WARNINGS

CERTAIN STATES REQUIRE, BY LAW, THAT THEIR OWN SPECIFIED WARNING NOTICES BE INCLUDED BY THE MANUFACTURER, DISTRIBUTOR, OR RETAIL DEALER WITH FIREARMS SOLD IN THAT STATE. WINCHESTER REPEATING ARMS SELLS ITS PRODUCTS IN COMPLIANCE WITH APPLICABLE LAWS AND REGULATIONS. BECAUSE OUR PRODUCTS MAY BE SOLD IN THESE STATES, WE INCLUDE THE FOLLOWING:

CALIFORNIA



Firearms must be handled responsibly and securely stored to prevent access by children and other unauthorized users. California has strict laws pertaining to firearms, and you may be fined or imprisoned if you fail to comply with them. Visit the Web site of the California Attorney General at <https://oag.ca.gov/firearms> for information on firearm laws applicable to you and how you can comply.

Prevent child access by always keeping guns locked away and unloaded when not in use. If you keep a loaded firearm where a child obtains and improperly uses it, you may be fined or sent to prison.

If you or someone you know is contemplating suicide, please call the National Suicide Prevention Lifeline at 1-800-273-TALK (8255).

ADVERTENCIA

Las armas de fuego deben de ser manipuladas responsablemente y almacenadas en sitios seguros para prevenir el acceso a ellas por parte de niños y personas sin autorización. California cuenta con leyes estrictas sobre las armas de fuego, y puede ser multado y encarcelado si no las obedece. Visite la página web de California Attorney General, <https://oag.ca.gov/firearms> para más información sobre cómo cumplir con las leyes de armas de fuego.

Prevenga el acceso de los niños a las armas de fuego manteniéndolas siempre en un lugar seguro, bajo llave y descargadas cuando no estén en uso. Si usted deja un arma cargada al alcance de un niño, y éste la utiliza indebidamente, usted podría ser multado e incluso enviado a la cárcel.

Si usted o alguien que conoce está pensando en suicidarse, llame a la línea Nacional de Prevención del Suicidio al 1-800-273-TALK (8255).

CONNECTICUT

“UNLAWFUL STORAGE OF A LOADED FIREARM MAY RESULT IN IMPRISONMENT OR FINE.”

FLORIDA

“IT IS UNLAWFUL, AND PUNISHABLE BY IMPRISONMENT AND FINE, FOR ANY ADULT TO STORE OR LEAVE A FIREARM IN ANY PLACE WITHIN THE REACH OR EASY ACCESS OF A MINOR UNDER 18 YEARS OF AGE OR TO KNOWINGLY SELL OR OTHERWISE TRANSFER OWNERSHIP OR POSSESSION OF A FIREARM TO A MINOR OR A PERSON OF UNSOUND MIND.”

MAINE

“ENDANGERING THE WELFARE OF A CHILD IS A CRIME. IF YOU LEAVE A FIREARM AND AMMUNITION WITHIN EASY ACCESS OF A CHILD, YOU MAY BE SUBJECT TO FINE, IMPRISONMENT OR BOTH. KEEP FIREARMS AND AMMUNITION SEPARATE. KEEP FIREARMS AND AMMUNITION LOCKED UP. USE TRIGGER LOCKS.”

MARYLAND

“WARNING: Children can operate firearms which may cause death or serious injury. It is a crime to store or leave a loaded firearm in any location where an individual knew or should have known that an unsupervised minor would gain access to the firearm. Store your firearm responsibly!”

MASSACHUSETTS

“WARNING FROM THE MASSACHUSETTS ATTORNEY GENERAL: This handgun is not equipped with a device that fully blocks use by unauthorized users. More than 200,000 firearms like this one are stolen from their owners every year in the United States. In addition, there are more than a thousand suicides each year by younger children and teenagers who get access to firearms. Hundreds more die from accidental discharge. It is likely that many more children sustain serious wounds, or inflict such wounds accidentally on others. In order to limit the chance of such misuse, it is imperative that you keep this weapon locked in a secure place and take other steps necessary to limit the possibility of theft or accident. Failure to take reasonable preventative steps may result in innocent lives being lost, and in some circumstances may result in your liability for these deaths.”

“IT IS UNLAWFUL TO STORE OR KEEP A FIREARM, RIFLE, SHOTGUN OR MACHINE GUN IN ANY PLACE UNLESS THAT WEAPON IS EQUIPPED WITH A TAMPER RESISTANT SAFETY DEVICE OR IS STORED OR KEPT IN A SECURELY LOCKED CONTAINER.”

NEW JERSEY

“IT IS A CRIMINAL OFFENSE TO LEAVE A LOADED FIREARM WITHIN EASY ACCESS OF A MINOR.”

NEW YORK CITY, NEW YORK

“THE USE OF A LOCKING DEVICE OR SAFETY LOCK IS ONLY ONE ASPECT OF RESPONSIBLE WEAPON STORAGE. ALL WEAPONS SHOULD BE STORED UNLOADED AND LOCKED IN A LOCATION THAT IS BOTH SEPARATE FROM THEIR AMMUNITION AND INACCESSIBLE TO CHILDREN AND ANY OTHER UNAUTHORIZED PERSONS. NEW YORK CITY LAW PROHIBITS, WITH CERTAIN EXCEPTIONS, ANY PERSON FROM ACQUIRING MORE THAN ONE FIREARM, OR MORE THAN ONE RIFLE OR SHOTGUN, WITHIN A 90-DAY PERIOD.”

NORTH CAROLINA

“IT IS UNLAWFUL TO STORE OR LEAVE A FIREARM THAT CAN BE DISCHARGED IN A MANNER THAT A REASONABLE PERSON SHOULD KNOW IS ACCESSIBLE TO A MINOR.”

Any person who resides in the same premises as a minor, owns or possesses a firearm, and stores or leaves the firearm (i) in a condition that the firearm can be discharged and (ii) in a manner that the person knew or should have known that an unsupervised minor would be able to gain access to the firearm, is guilty of a Class 1 misdemeanor if a minor gains access to the firearm without the lawful permission of the minor’s parents or a person having charge of the minor and the minor:

- (1) Possesses it in violation of G.S. 14-269.2(b)
- (2) Exhibits it in a public place in a careless, angry, or threatening manner;
- (3) Causes personal injury or death with it not in self defense; or
- (4) Uses it in the commission of a crime.

TEXAS

“IT IS UNLAWFUL TO STORE, TRANSPORT, OR ABANDON AN UNSECURED FIREARM IN A PLACE WHERE CHILDREN ARE LIKELY TO BE AND CAN OBTAIN ACCESS TO THE FIREARM.”

WISCONSIN

“IF YOU LEAVE A LOADED FIREARM WITHIN THE REACH OR EASY ACCESS OF A CHILD YOU MAY BE FINED OR IMPRISONED OR BOTH IF THE CHILD IMPROPERLY DISCHARGES, POSSESSES, OR EXHIBITS THE FIREARM.”

PLEASE CONSULT YOUR LOCAL FEDERALLY LICENSED FIREARMS RETAILER, STATE POLICE OR LOCAL POLICE FOR ADDITIONAL WARNINGS THAT MAY BE REQUIRED BY LOCAL LAW OR REGULATION. FIREARMS REGULATIONS CHANGE CONSTANTLY AND YOUR LOCAL AUTHORITIES ARE THE BEST SOURCE FOR THE MOST CURRENT INFORMATION ON SUCH LEGAL MATTERS.



Winchester Repeating Arms

275 Winchester Avenue

Morgan, UT 84050-9333

winchesterguns.com

AO2204/21447

Winchester is a registered trademark of Olin Corporation.