

Lever Action Rifle



Model 1873

IMPORTANT: When ordering, list part number, part name, gun gauge/caliber and serial number. Please specify grade. Prices F.O.B. point of shipment — subject to change without notice. Prices effective January 1, 2024.

Ref. #		Part #	Description
1	*	U34260001	STOCK, SHORT RIFLE
1	*	U34260004	STOCK, SPORTER OCTAGON, PISTOL GRIP
4		U342210101	TANG SCREW (UPPER)
5		U342620001	TANG SCREW (LOWER)
7	*	U342350101	FIRING PIN
8	*	U342359701	FIRING PIN SPRING
9	*	U342341101	EXTRACTOR, 357/38
9	*	U34260006	EXTRACTOR, 44-40
10	*	U342343101	EXTRACTOR PIN
12	*	U342359901	FIRING PIN SAFETY LOCK PIN
14	*	U342359401	FIRING PIN INERTIA SLIDE SPRING
18	*	U342359601	FIRING PIN LOCK PIN
20		U342230201	FINGER LEVER SCREW
22		U342230301	FINGER LEVER SPRING
23		U342230401	FINGER LEVER SPRING SCREW
32	*	U34265001	FOREARM, SHORT RIFLE
32	*	U34260005	FOREARM, SPORTER, OCTAGON
33		U342660001	FOREARM TIP
34		U342661001	FOREARM TIP SCREW
39		U34924804	REAR SIGHT ELEAVTOR T1 (.185) (44-40)
39		U34924805	REAR SIGHT ELEAVTOR T2 (.225) (44-40)
39		U34924806	REAR SIGHT ELEVATOR (357 MAG.)
39		U34924801	REAR SIGHT ELEVATOR T1 (.185)
39		U34924802	REAR SIGHT ELEVATOR T2 (.225)
39		U34924803	REAR SIGHT ELEVATOR T3 (.260)
41		U342250001	MAGAZINE TUBE
44		U342250301	MAGAZINE PLUG
45		U342250401	MAGAZINE TUBE PLUG SCREW
46		U342250601	MAGAZINE TUBE SET PIN
51		U342220101	SPRING COVER SCREW
52		U342280301	SIDE PLATE SCREW
53		U342290101	DUST COVER
55		U342290500	DUST COVER SCREW
56		U342290201	DUST COVER BALL
57		U342290501	DUST COVER SPRING
61		U342412101	FINGER LEVER LATCH
62		U342412301	FINGER LEVER LATCH SPRING
63		U342412201	FINGER LEVER LATCH PIN
79		U342280301	SIDE COVER SCREW
80		U342160001	SIGHT FILLER SCREW (FOR UPPER TANG SIGHT)
	*	U342359802	FIRING PIN STRIKER ASSEMBLY
Additional parts are available by contacting our parts department. 1-800-322-4626 x3			

*Indicates part must be fitted by Winchester Repeating arms Service Department or qualified gunsmith.

**Factory installation only - Return firearm for installation.

+Part may be purchased only by holders of current, valid Federal Firearms License.

NOTE: unless otherwise indicated, part is interchangeable between gauges/calibers.

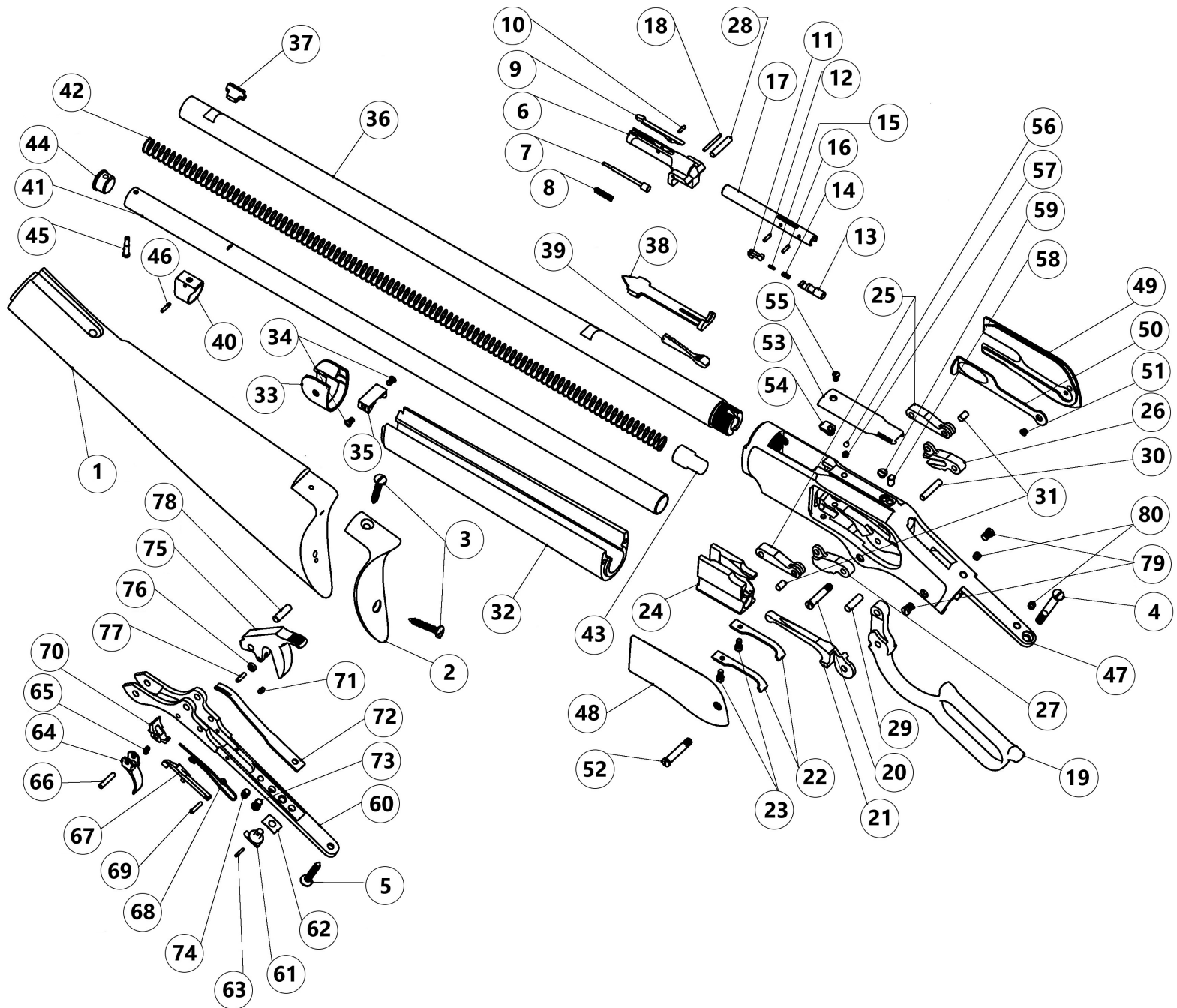
Winchester Gun Parts Price List

Lever Action Rifle



Model 1873

NOTE: WHEN ORDERING PARTS, USE THE PART NUMBER AND NOT THE SCHEMATIC REFERENCE NUMBER.



Schematic is provided for parts identification only and should not be used as a guide to assemble guns.
CAUTION: Winchester parts are not recommended for use in other guns though models may be similar.
Inadequately fitted parts may be dangerous.

Winchester Gun Parts Price List